

Accessibility Guide for Cayton Village Caravan & Motorhome Club Site

Contact for Accessibility Enquiries: Please ask for the Duty Manager

✉ caytonvillage@camc.com

☎ 01723 583171

🌐 <https://www.caravanclub.co.uk/club-sites/england/yorkshire/north-yorkshire/Cayton-Village-Club-Site/>

At a Glance



Level Access

- Most of the site is set at a level access and is relatively flat throughout
- All areas have level access in at least one area.
- There is one accessible Glamping Pod and one accessible Glamping Cabin



Step only Access

- Glamping Pods
- Glamping Cabins



Accessible Toilets and Showers

- There are 2 accessible combined toilet and shower cubicles. One in the toilet block on the lower site, and one in the toilet block on the upper site.
- There are 2 family washrooms available. One in the toilet block on the lower site, and one in the toilet block on the upper site.



Accessible Pitches

- No designated accessible pitches, however pitches are allocated according to your needs or preference, so please contact us in advance to discuss your requirements.



We support the Hidden Disabilities Scheme

- Our organisation supports the Hidden Disabilities Scheme, lanyards and pins are available in reception.

Site Address

Cayton Village Club Site
Mill Lane,
Cayton Bay, Scarborough,
North Yorkshire,
YO11 3NN

Arrival and Reception

Approach Route

- The reception building is immediately on the right hand side to the site entrance
- The gate from the road is left open at all times but access into the site is controlled via a vehicle barrier controlled by card access.
- The ground is level in this area with hard surfaced paths linking facilities.

Parking

- A new arrival bay is set within a few metres of the Reception building.
- There are 6 standard parking bays for visitors are also available within 20 metres of Reception
- There is 1 late arrival bay next to the visitor bays, with access to an electric connection charging bollard.

Entrance into Reception

- There are three entrances, two with ramps set at a low gradient (1:20) the other with a single step. The ramps have a single handrail each.
- The Entrance door is 790mm wide
- The entrance door is not power assisted, and opens by pushing inwards



Reception

- There is approximately 2830mm x 23850 turning space, clear of the desk.
- The reception desk is set 1000mm above the floor and incorporates a dropped, lift up counter top which is 760mm high with kneespace of 1000mm in width
- The desk is not fitted with a hearing loop



Getting around the Site

Pitches

- The site is generally set relatively level throughout
- Pedestrians share vehicle routes which are well maintained tarmac.
- There are 206 pitches on site, 196 of which are hardstanding
- Roll out mats are not provided
- There are no designated accessible pitches, however pitches are allocated according to your needs or preference, so please contact us in advance to discuss your requirements.
- Nearest pitches to toilet blocks – 20 metres
- Nearest pitches to Reception – 15 metres
- Pitches are allocated according to need/preference. Please contact us in advance to discuss your requirements.

Camping Pitches

- There are 6 camping pitches on site, all of which are located within 50 metres of the toilet block on the lower site

Toilets and Changing Facilities

Accessible Toilets and Bathing facilities – Toilet Block 1 (Lower Site)

- A combined Accessible Toilet and Shower cubicle is located in Toilet Block 1 which is set on the lower site.
- The cubicle door is 900mm wide, over a level threshold
- The cubicle door is secured by RADAR key. A key can be borrowed from Reception
- The cubicle's overall dimensions are 2700 x 2650mm
- The WC pan is left hand transfer.
- The shower seat is left hand transfer
- The toilet seat is 490mm, and the shower seat is 485mm above the floor level
- The clear space to the side of the toilet is 1900mm wide
- The cubicle is fitted with a pull cord alarm, which is tested frequently
- The shower seat and WC Pan are fitted with grab rails to assist transfer
- Shower controls are 960mm high
- The shower head is fitted on a sliding rail, which is a minimum of 1080mm above floor level
- The basin taps and shower controls are fitted with levers



Accessible Toilets and Bathing facilities – Toilet Block 2 (Upper Site)

- A combined Accessible Toilet and Shower cubicle is located within the toilet block on the upper site.
- The cubicle door is 900mm wide, over a level threshold
- The cubicle door is secured by RADAR key. A key can be loaned from Reception
- The cubicle's overall dimensions are 2700 x 2640mm
- The WC pan is left hand transfer
- The shower seat is left hand transfer
- The toilet seat is 490mm above floor level, and the shower seat is 485mm above floor level
- The clear space to the side of the toilet is 1900mm wide
- The cubicle is fitted with a pull cord alarm, which is tested frequently
- The shower position and WC Pan are fitted with grab rails to assist transfer
- Shower controls are set within 960mm of floor level
- The shower head is fitted on a sliding rail, which is a minimum of 1280mm above floor level
- The basin taps and shower controls are fitted with levers



Standard Toilets and Washrooms

- There are two toilet and shower blocks, one on the lower site and one on the upper site.
- Parking is available within 20 metres of the toilet block on the lower site
- All entrance doors are over a level threshold.

- In the Upper Toilet Block the male and female areas have 7 shower cubicles and 5 washbasin privacy cubicles
- In the Lower Toilet Block the male and female areas have 8 shower cubicles and 5 washbasin privacy cubicles
- There is also an accessible cubicle to each male and female area. These are fitted with an outward opening door and grab rail.
- Taps in each block incorporate lever controls



Both Toilet Blocks are accessible via dropped kerb, and a smooth paved area.

Other Facilities

Dishwashing – Lower Toilet Block

- Level approach, level threshold
- Door is approximately 800mm wide, and will hold itself open once opened fully
- 850mm high worksurface
- Lever taps
- There is 1600mm x 2600mm clear space within the room.

Dishwashing – Upper Toilet Block

- Level approach, level threshold
- Door is approximately 800mm wide, and will hold itself open once opened fully
- 850mm high worksurface
- Small lever taps
- There is 1600mm x 2600mm clear space within the room.

Laundry – Lower Toilet Block

- Level access, level threshold
- The door is 800mm wide, and will hold itself open once opened fully
- 2 washing machines and 2 tumble dryers, both washing machines are on the ground. One tumble dryer is placed on top of the other one, so is not fully accessible
- 2 sinks at 850mm high with 540mm knee space below.
- Lever taps fitted
- There is 1600mm x 2800mm clear space within the room



Laundry – Upper Toilet Block

- Level access, level threshold
- The door is 800mm wide, and will hold itself open once opened fully
- Washing machine and tumble dryer both on ground level
- 2 sinks at 850mm high with 540mm knee space below.
- Lever taps fitted
- There is 1600mm x 2070mm clear space within the room



Family Washroom - Lower Toilet Block

- Level access, level threshold
- The door is 800mm wide
- Half sized bathtub
- Shower with grab rails and shower chair available



Family Washroom - Upper Toilet Block

- Level access, level threshold
- The door is 800mm wide
- Half sized bathtub
- Shower with grab rails and shower chair available



Chemical Toilet Emptying Point – Lower Toilet Block

- Level access
- The door is 700mm wide
- Tap is 1150mm from the ground
- The flush pull is 1150mm from the ground

Chemical Toilet Emptying Point – Upper Toilet Block

- Level access
- The door is 700mm wide
- Tap is 1150mm from the ground
- The flush pull is 1150mm from the ground

Service Points

- Located at regular intervals around the campsite - check the site map for details
- Level access to roads
- Narrow access to some service points, as narrow as 700mm in some points
- Chemical Waste Service Points can be found at regular intervals



Children's Playground

- The children's playground is located just behind the toilet block on the lower site
- There is level access
- The gate is 1120mm wide that opens outwards
- There is a range of playground equipment mounted on safety surfacing
- There is a hard surfaced football/basketball court at the entrance of the upper site



Dog Walk

- One Located at the back of the lower site
- One Located at the back of the upper site
- Level access
- Entrance is over gravel flooring

Dog and Bike Wash

- One located behind the toilet block on the lower site, one located in front of the toilet block on the upper site
- Level access to the one on the lower site
- Access over a 90mm curb on the upper site



Onsite Accommodation

- There is a range of onsite accommodation available to book to stay in. The details of each are below.

Glamping Pods

- 4 glamping pods and are situated on the lower site, opposite the entrance
- 1 Universally Accessible Glamping pod situated here as well
- Accessed by tarmac roads
- Designated parking spaces for each pod and cabin, including an accessible bay for the Universally Accessible Glamping Pod and Cabin
- There is a Tarmac path leading from parking to each pod
- There are 3 steps up to each pod, and a ramp on a low gradient to the Universally Accessible Glamping Pod
- Lever controls to bathroom and kitchen taps
- Entrance doors are 830mm wide over a 70mm threshold.
- Corridors within can be as narrow as 430mm.
- The bathroom has very narrow walkways - it can only accommodate one adult at any time.



Stepped access up to Glamping Pod only.



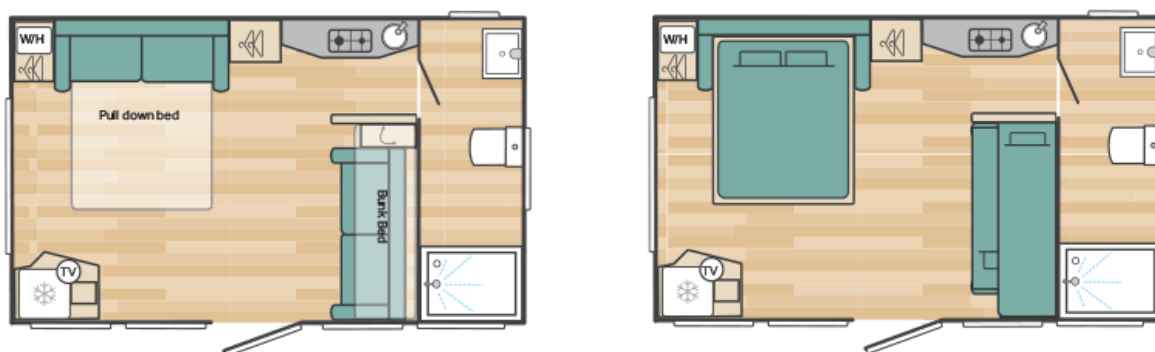
The corridor to the kitchen and bathroom is very narrow as can be seen in the left of the photos.



With all of the beds pulled out there is limited moving space.



The main double bed is a “Pull Down” with the handle for this at 2meters high. The bed requires a reasonable amount of effort to pull out.



Floorplan of the Glamping Pod in both daytime and nighttime layouts.



The bathroom inside the Glamping pods is very narrow

Universally Accessible Glamping Pod

- There is 1 Universally Accessible Glamping Pods situated on the Lower Site, opposite the entrance
- This is accessed by tarmac roads
- There is a tarmac car park with one designated accessible bay for this pod, which is closer to the pod than the rest of the car park.
- There are tarmac paths leading directly from the car park to the pod
- There is a ramp that is 1120mm wide with a low gradient leading up to the pod
- Entrance door is 900mm wide over a level threshold.
- Walkways are 950mm at the smallest point
- The door to the bathroom is 900mm wide
- The bathroom is a wetroom, with dimensions of 1950mm x 1900mm
- The toilet seat is 540mm above the ground
- The shower controls are 910mm above the ground
- The sink in the bathroom is 720mm above the ground with clear space underneath
- Lever taps in bathroom and kitchen
- The sink and the hob are 830mm from the ground, the microwave is underneath the hob.
- There is 185mm deep knee space underneath the sink to allow easy access to washing up
- The bed has two separate mattresses, both of which have settings that can be controlled by remotes attached to the bed.
- Each mattress is 1980mm long, 920mm wide and the bed is set 600mm off of the ground (including the mattress height)
- All lightswitches are 1050mm off of the ground
- The blinds are controlled by remote control



Floorplan of the Universally Accessible Glamping Pod



Entrance into the Universally Accessible Glamping Pod is via a tarmac path and a shallow ramp onto a decking area.



The front door has a level threshold.



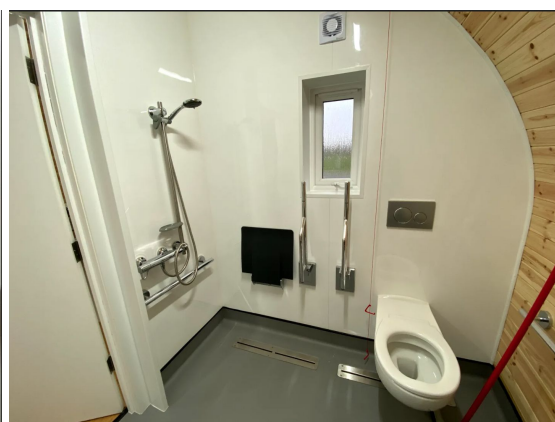
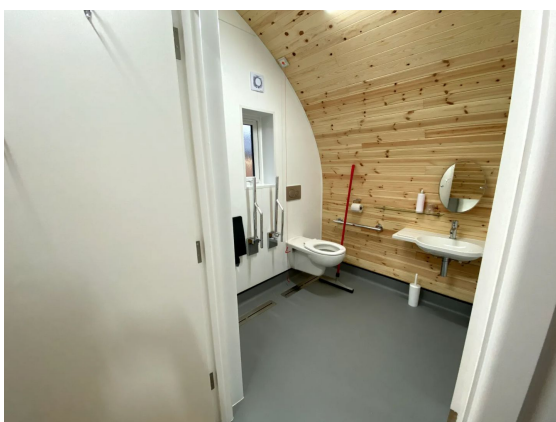
The bed is immediately accessible through the front door, and each half of the mattress is adjustable via a remote control just above the bed. There is also an emergency pull cord next to the bed.



There is a futon that can be used as a bed and a fold out table available for meals in the front section of the pod.



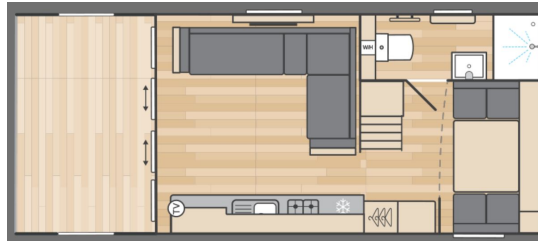
The access to the kitchen and the bathroom is wide and all of the appliances are at a lower level.



The bathroom is at the back of the pod and is a wet room with plenty of turning space.

Glamping Cabins

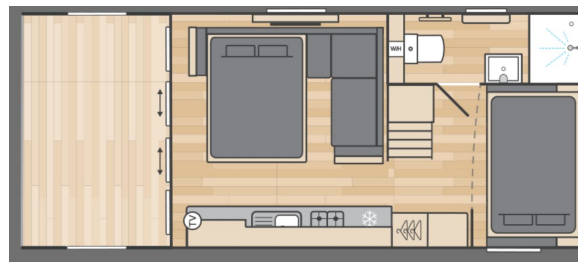
- There are 6 Glamping Cabins situated on the Lower Site, opposite the entrance
- There is 1 Universally Accessible Glamping Cabin situated here as well
- Designated parking spaces for each pod and cabin, including an accessible bay for the Universally Accessible Glamping Pod and Cabin
- There is a Tarmac path leading from parking to each Cabin
- There are 3 steps up to each cabin, and a ramp on a low gradient to the Universally Accessible Glamping cabin
- Lever controls to bathroom and kitchen taps
- Entrance doors are 1200mm wide over a 100mm threshold that you must step over
- The kitchen counters are 920mm high, with cupboards underneath so no knee space
- The hob is placed over the oven at 920mm high
- The microwave is 1430mm high, placed adjacent to the upper cabinets
- Walkways within become as narrow as 690mm.
- The door to the bathroom is 550mm
- The bathroom has is narrow, approximately 1000mm wide but narrows to 560mm where the sink is placed
- The shower is 720mm x 980mm
- There are 6 wide ladder steps up to the mezzanine level (steps are 145mm deep, with a 240mm step up) and a small landing at the top of the ladder which is 560mm x 560mm
- The space between the mezzanine floor and ceiling is 970mm high
- The pull down bed over the dining area requires strength and control as the handle is approximately 1900mm above the floor and the bed is very heavy. It requires two hands to pull down.
- Once the bed is down it is 770mm from the ground (including the mattress)
- The pull out bed in the living area needs to be done carefully so as to not trap fingers. All cushions must come off and then the bed can be folded out.
- Once the bed is pulled out it is 450mm from the ground and there is 750mm between the bed and the counters



Floorplan of the Glamping Cabins in the Daytime Layout



Floorplan of the Mezzanine level



Floorplan of the Glamping Cabin in the Nighttime Layout.



Access to the cabins is via a tarmac path and up three steps.



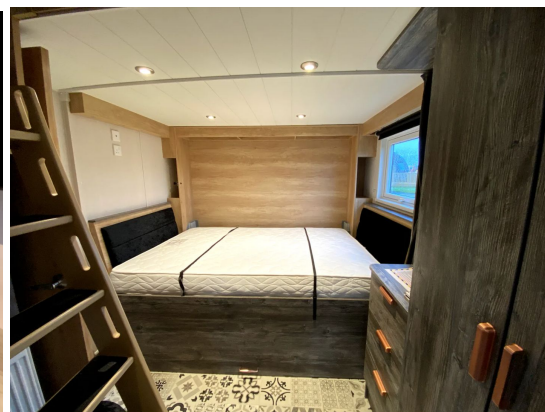
Entrance to the cabin through sliding doors with a 100mm threshold.



You immediately enter into the living area, with the kitchen on the right and the sitting area on the left.



The sofa turns into a fold out bed.



There is a dining area at the back, which pulls down into a bed.



There is a ladder that goes up to the mezzanine level, where there is a further bed.



The bathroom is at the back of the cabin, and narrows to 560mm wide between the sink and the wall.

Universally Accessible Glamping Cabin

- There is 1 Universally Accessible Glamping Cabin situated on the Lower Site, opposite the entrance
- This is accessed by tarmac roads
- There is a tarmac car park with one designated accessible bay for this cabin, which is closer to the cabin than the rest of the car park.
- There are tarmac paths leading directly from the car park to the cabin
- There is a ramp that is 1120mm wide with a low gradient leading up to the cabin
- Entrance door is 900mm wide over a level threshold.
- Walkways are 950mm at the smallest point
- The door to the bathroom is 900mm wide
- The bathroom is a wetroom, with dimensions of 1950mm x 1900mm
- The toilet seat is 540mm above the ground
- The shower controls are 910mm above the ground
- The sink in the bathroom is 720mm above the ground with clear space underneath
- Lever taps in bathroom and kitchen
- The sink and the hob are 830mm from the ground, the microwave is underneath the hob.
- There is 185mm deep knee space underneath the sink to allow easy access to washing up
- The bed has two separate mattresses, both of which have settings that can be controlled by remotes attached to the bed.
- Each mattress is 1980mm long, 920mm wide and the bed is set 600mm off of the ground (including the mattress height)
- All lightswitches are 1050mm off of the ground
- The blinds are controlled by remote control
- The door to the second bedroom is 900mm wide and slides
- The lower bunk is 600mm from the ground
- Both bunks are 1800mm x 900mm
- The top bunk is accessed by using a lightweight ladder that is mounted on the wall opposite the beds



Floorplan of the Universal Glamping Cabin



Entrance into the Universally Accessible Glamping Cabin is via a tarmac path and a shallow ramp onto a decking area.



The front door has a level threshold.



The bed is immediately accessible through the front door, and each half of the mattress is adjustable via a remote control just above the bed. There is also an emergency pull cord next to the bed.



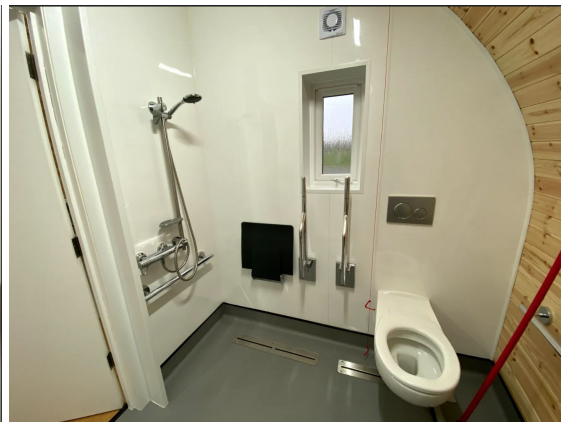
There is a futon that can be used as a bed and a fold out table available for meals in the front section of the pod.



In the middle section of the cabin there is a bedroom which is accessed via a sliding door and has a bunk bed inside.



The access to the kitchen and the bathroom is wide and all of the appliances are at a lower level.



The bathroom is at the back of the cabin and is a wet room with plenty of turning space.

Glamping Parking

The approach to the Glamping Pods and Cabins is very simple as it is opposite the entrance of the site. The Car Park for Glamping is opposite reception and the pathways to each Pod and Cabin are tarmaced and each Pod or Cabin is clearly signposted.

There is a trolley available at the carpark to help take luggage to each pod



Layout of the Glamping Pods, Cabins and Carpark.



The path linking all of the Glamping Pods and Cabins is tarmac.

Information

Written Information

- A Large print version of the site leaflet is available from Reception
- Please ask at reception if you have difficulty reading third party leaflets and staff will be happy to read these to you upon request

Customer Care & Support

Booking Procedures

- If you have any specific requirements for your stay please contact the site directly and they will be happy to discuss your requirements and reserve you the most suitable pitch wherever possible.

Evacuation

- An Evacuation Plan can be found in each Pod or Cabin.
- One assembly point is opposite reception and one is next to the car park on the upper site - see site map for details
- Please ask at reception for further information

Customer Care and Staff Training

- All on site staff have received disability awareness and etiquette training.

Public Transport

- A Bus stop is sited very close to the site's entrance that goes towards Scarborough, Filey and Bridlington.
- The train station is 2.1miles away
- There is a park and ride just 1 mile from site that goes to Scarborough
- Further details can be found on the bus operator website eastyorkshirebuses.co.uk

Taxi

- Please contact the site who keep a list of local taxi companies including those offering a wheelchair accessible service where available.