

## Accessibility Guide for Adapted Accessible Glamping Cabin at Lady Margaret's Caravan & Motorhome Club Site

Contact for Accessibility Enquiries: Please ask for the Duty Manager

✉ [lady-margarets-park@camc.com](mailto:lady-margarets-park@camc.com)

☎ 01691 777200

🌐 <https://www.caravanclub.co.uk/club-sites/wales/wrexham/lady-margarets-park-caravan-club-site/>

### At a Glance



#### Level Access

- The site slopes throughout, with the steepest slope between the toilet block and the glamping area



#### Step only Access

- There is a small step into the information room
- The adapted accessible glamping cabin has step-free access



#### Accessible Toilets and Showers

- There is a combined accessible toilet and shower cubicle in the toilet block
- There is a combined accessible toilet and shower room in the glamping cabin



#### We support the Hidden Disabilities Scheme

- Our organisation supports the Hidden Disabilities Scheme, and lanyards and pins are available in reception



#### We are Dementia Friendly

- Our organisation has been Dementia Friendly since 2025



#### Relay UK

- Our contact centre in East Grinstead supports Relay UK from BT

## **Site Address**

Lady Margaret's Park Caravan Club Site  
Chirk,  
Wrexham,  
LL14 5AA,  
Wales

## **Arrival and Reception**

### **Approach Route**

- Access onto the site is via a tarmac driveway
- The reception building is on the left-hand side of the entrance road
- The gate from the road is left open at all times, but access into the site is via a vehicle barrier controlled by automatic number plate recognition. The barrier opens automatically if the vehicle registration is the same as the information held with us and you have paid in full. If you'd prefer to check in personally, feel free to pull into the reception lane during office hours.
- The ground is level in this area with hard-surfaced paths linking facilities.

### **Parking**

- A new arrival bay is set within a few metres of the Reception building.
- There is space for 2 cars to park on the opposite side of the road to the reception.
- There are no late-night arrival bays

### **Entrance into Reception**

- There is a 1200mm wide ramp to the reception door
- The Entrance door is 850mm wide, with a 40mm threshold
- The entrance door is not power-assisted and opens outwards
- A call bell is available to summon assistance; this is 1500mm above ground level



## Parking

- There is a dedicated car park for the glamping units, with each unit having a sign-posted space
- The adapted accessible glamping cabin has a marked accessible parking space next to the entrance of the cabin
- The parking area can be seen on the site map below
- There is a Tarmac path leading from the parking to each Cabin



## Access to Cabin

- The adapted accessible Glamping Cabin has a ramp to access, at a very shallow gradient
- There is a 1200mm wide gate to access the decking area, with a latch at 800mm high
- The decking area has a minimum of 950mm clear space, around a table with an umbrella, with space to sit in a wheelchair



- Entrance doors are sliding doors, one door opens to 625mm wide, but with both open, they open to 1250mm wide over a rollover threshold, with a 40mm lip



### Internal Cabins

- The kitchen counters are 920mm high, with cupboards underneath, so no knee space
- There is a dropped counter at 720mm high, with an easy pour kettle and the toaster placed on top
- The hob is placed over the oven at 920mm high
- Lever controls the kitchen tap
- The microwave controls are 1300mm high
- When the fold-out sofa bed is away, there is a minimum of an 800mm wide walkway behind the kitchen counters



- The living room is a multi-use space, as the sofa can be pulled out into a double bed, and there is a table stored between the sofa and the glass wall that can be used as a dining table
- The pull-out bed in the living area needs to be done carefully so as to not trap fingers. All cushions must come off, and then the bed can be folded out.
- Once the bed is pulled out, it is 450mm from the ground, and there is 600mm between the bed and the counters



- There is a downstairs bedroom with a choice of room layouts. It can be a twin room with two single beds, a single room with the bed against the far wall or in the middle of the room, or it can be converted into a double bed by having the two single beds placed together.

- When the room is in a twin configuration, there is 300mm space between the beds



- When the room is in a single layout, with the bed against the far wall, there is 1040mm clear space, which allows for a right-hand transfer to the bed



- When the room is in a single layout, with the bed in the middle of the room, there is 500mm clear space on either side of the bed



- When the room is in a double bed configuration, the two beds are placed together, and there is only access from one side of the bed, with 300mm clear space to the far side.



- The single bed (left as you look at it) is a power-operated bed with controls to allow the user to move the position of the bed (up, down, and adjust the head and foot areas of the bed).
- The door to the room opens to 800mm wide
- There is 690mm clear space at the foot of the bed(s) – this is the walkway to the bathroom



- The door to the bathroom is a (Tambour) sliding door that opens around a bed to at least 800mm wide
- The bathroom is a wetroom, with a toilet, shower, shower seat and washbasin.
- There is a 1200mm x 2000mm clear space within the bathroom
- The toilet seat is 450mm high, has left hand transfer and a minimum of 1100mm wide clear space to the side, with transfer space across the folded shower chair
- The shower controls are 900mm high, with a movable shower head that can be between 1000mm and 1600mm high
- The shower chair is 460mm high and has left hand transfer with 1300mm clear space



- The washbasin is 800mm high and 400mm deep



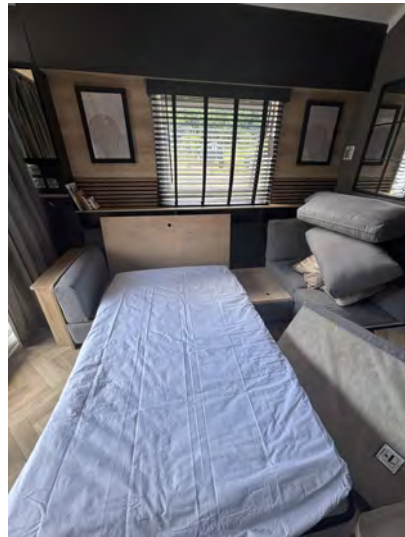
- There are 6 x 500mm wide steps up to the mezzanine level, the bottom two are standard steps, and the top four are 140mm wide ladder steps, with a small landing at the top of the ladder, which is 560mm x 500mm
- The space between the mezzanine floor and the ceiling is 970mm high



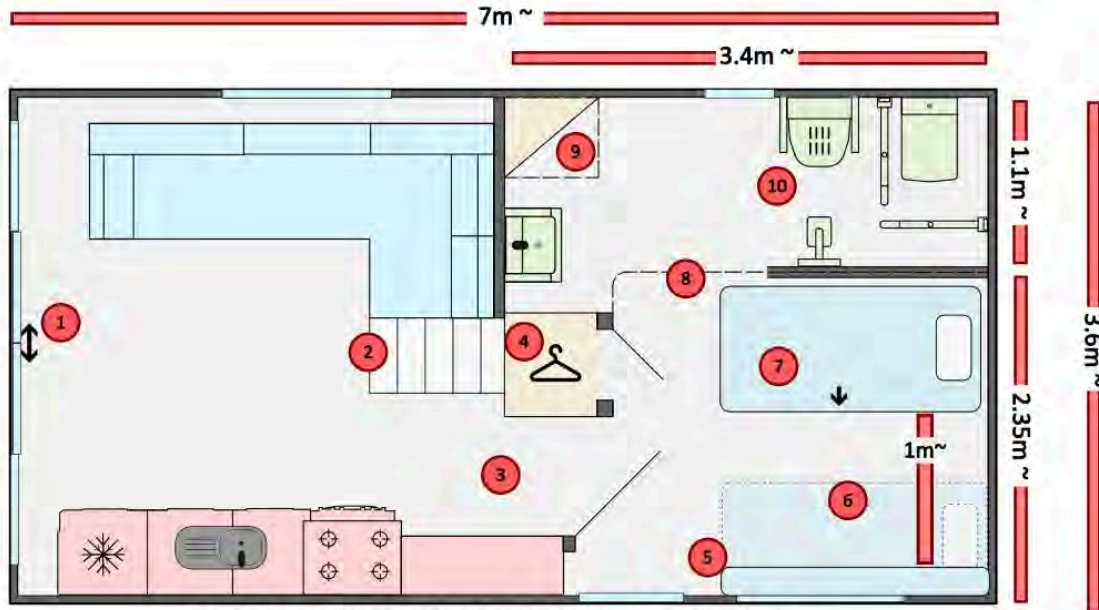
- The mezzanine floor has two single beds



## Accessibility Guide for Adapted Accessible Glamping Cabin at Lady Margaret's Park



The sofa turns into a fold-out bed.



Swift SPod-6 With Wheelchair Accessible Modifications

Key:					
1	Low threshold access doors	3	Wide access door to bed room, 800mm~	5	Flip up bed, 800mm wide
2	Trimmed steps to reach mezzanine	4	Under-stairs wardrobe	6	1m+ of turning space when bed flipped up
7	Profiling bed, 1855x900mm, able to slide for turning space	8	Sliding tambour door, 1m+ clearance	9	High level heater cupboard to provide turning space
10	Full wet room with support arms, and antislip flooring				

A floorplan of the ground floor of the Adapted Accessible Glamping Cabin